

Position Announcement Data & GIS Analyst (Full-Time)

Come join our team! The Capitol Region Council of Governments (CRCOG) is seeking a dynamic and collaborative professional to become our newest entry level Data & GIS Analyst.

The successful candidate will perform various data analysis, mapping and planning tasks within CRCOG's. This position reports to the IT & GIS Manager.

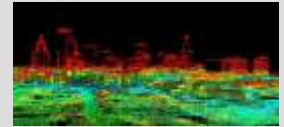
This position is responsible for a variety of mapping, data analysis and planning tasks including, but not limited to: preparing reports, static maps, interactive mapping products; and working with other staff members to help the Agency and municipalities access information.

The candidate should have knowledge of: general principles of Geographic Information Systems (GIS); data analysis and computing, including the advanced use of word processing, spreadsheet, graphics, database, and other software. The ideal candidate will have the ability to: communicate clearly and effectively orally and in writing; collect and analyze data; prepare clear, accurate maps, records and reports; establish and maintain highly effective working relationships with staff, managers, community members, municipal leaders, and others encountered during work; handle multiple projects simultaneously and use good judgment in prioritizing work assignments; and work independently.

The successful candidate will hold a Bachelor's degree from an accredited college or university with a major in planning, urban studies, geography/GIS, or civil engineering. A Master's degree is preferred but not required. An equivalent combination of training will be considered.

About CRCOG

The Capitol Region Council of Governments (CRCOG) is a voluntary Council of Governments formed to initiate and implement regional programs to benefit our member towns and the region. CRCOG is guided by the chief elected officials of our 38 Metro Hartford municipalities who recognize that the future of our individual members is tied to the future of our region. CRCOG is the largest of Connecticut's nine regional planning organizations with a population of approximately 977,000 and serves as the Metropolitan Planning Organization (MPO) for the Metro Hartford area. The CRCOG region is well-situated between New York City and Boston, and it is rich in diversity,



How to Apply

Send resume and cover letter to:

Ms. Cheryl Assis,
Hiring Coordinator
cassis@crcog.org

Subject: Data & GIS Analyst

history, and natural resources. CRCOG's team of professional staff work to promote responsible land use, sustainable transportation systems, economic vitality, and quality of life. The organization also advocates for its capital city and member towns and provides various shared services to facilitate governmental efficiency. For more information regarding CRCOG, please visit our website at www.crcog.org.

Total Compensation

The current salary range is \$58,247 – \$75,720 (Grade 3). CRCOG offers a competitive benefits package including a defined contribution retirement plan (currently 10% of salary with no match required); medical, vision, dental, life insurance; short-term and long-term disability; tuition assistance; and paid vacation and holidays. This is a full-time position with a 35-hour work week.

How to Apply

Please address your resume and a cover letter to Ms. Cheryl Assis, Hiring Coordinator. Electronic submissions are preferred and should be sent as a single PDF file to cassis@crcog.org, with the email subject of "Data & GIS Analyst." The first review of resumes will be conducted on September 22, 2025, and the position will remain open until filled.

CRCOG is proud to be an Equal Opportunity Employer.